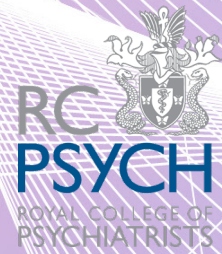


**College of Psychiatrists  
of Ireland**

Wisdom • Learning • Compassion



# WINTER CONFERENCE 2022

JOINT CONFERENCE OF THE COLLEGE OF PSYCHIATRISTS  
OF IRELAND AND THE RCPsych NI

CPD APPROVAL

14 EXTERNAL/INTERNAL CPD CREDITS (7+7)

**Thursday 10th & Friday 11th November**  
**Location: Grand Hotel, Malahide, Dublin**



# Welcome

---

The days close in, the mercury drops and Winter looms but, now that we can all meet again, there is always that bright spot to our November! I would like to welcome you all to our Winter Conference. This will, once again, be a joint conference with the Northern Ireland Division of the Royal College of Psychiatrists and we would like to extend a very warm welcome to our colleagues from our sister organisation.

On Wednesday night, we have incorporated the ever-popular Spike Milligan public speaking competition and I hope you will enjoy this year's topic. The competition is always entertaining and showcases some excellent speakers.

As this is my last conference as Vice-President and Conference Academic Coordinator, I would like to take this opportunity to thank the Conference Committee for all its support and suggestions over the past number of years. I would also like to extend a huge thank you to Miriam, Jennie and all the College staff. The amount of work that is required to arrange an event such as this, whether on line or in person, should not be underestimated and we owe all of these people a debt of gratitude.

I would like to thank all our presenters and chairs. Over the two days, we will see a wide range of topics brought to us by some of our own colleagues and those from abroad. We will also see the launch of our newest Faculty, the Faculty of Youth and Student Psychiatry.

Conferences such as these are not all about learning. It is a chance to catch up with colleagues, become reacquainted with people we haven't seen in a while and let the proverbial hair down – so enjoy the coffee breaks, chats over breakfast or our conference dinner.

Thank you for attending our Conference and have an educational and enjoyable time!



---

**Dr Lorcan Martin**

Vice-President and Conference Academic Coordinator,  
College of Psychiatrists of Ireland



# WEDNESDAY 9TH NOVEMBER 2022

---

18:30 - 19:00

## **SPIKE MILLIGAN PUBLIC SPEAKING COMPETITION 2022**

**TARA SUITE**

The All Ireland Intersvarsity Competition for Medical Students

Topic: Social Media and Digital Platforms – 'Are they the cause of or solution to the nation's mental health crisis?'

2 EXTERNAL CPD CREDITS – Doors open at 18:30

---

# THURSDAY MORNING

From 8.15

**REGISTRATION & POSTER EXHIBITION**

O'CAROLAN SUITE

09:20

## **WELCOME ADDRESS**

**TARA SUITE**

Dr William Flannery, President, College of Psychiatrists of Ireland & Dr Richard Wilson, Chair of RCPsych NI

---

09:30 -  
10:30

## **PSYCHOPHARMACOLOGY**

**TARA SUITE**

### **PSYCHOPHARMACOLOGY IN FIRST EPISODE PSYCHOSIS. ALGORITHMS, ADVERSE EVENTS AND ADJUNCTIVE TREATMENTS**

*Associate Prof Brian O'Donoghue – Associate Professor, UCD & University of Melbourne and Consultant Psychiatrist, St. Vincent's University Hospital, Dublin*

This presentation will discuss findings from a recent meta-analysis on the effectiveness of treatment guidelines/ algorithms for the pharmacological management of psychotic disorders and the response rates achieved with each step of these algorithms, which typically recommend clozapine as third line. The current challenges and recommendations for the management of adverse side-effects of antipsychotic medication will also be discussed, with a particular focus on cardio-metabolic side effects. Finally, research findings on the potential effectiveness of adjunctive treatments for first episode psychosis, such as N-acetylcysteine, vitamin D and omega-3 polyunsaturated fatty acids will be presented.

### **DRUG DEVELOPMENT IN SCHIZOPHRENIA: PAST, PRESENT AND FUTURE**

*Prof Mark Weiser, Chairman, Psychiatry Division, Sheba Medical Center, Israel*

After many years of limited progress, over recent years there has been an increase in drug development for schizophrenia, including partial dopamine agonists, muscarinic agonists, drugs controlling olanzapine induced weight gain, Trace Amino Acid Receptor agonists and glycine reuptake inhibitors. A brief overview of the development of current treatments will be presented, as well as these exciting new developments.

**CHAired BY: PROF DAVID COTTER**

---

---

10:30 -  
11:30

## YOUTH MENTAL HEALTH

TARA SUITE

### COLLEGE OF PSYCHIATRISTS OF IRELAND YOUTH MENTAL HEALTH FACULTY LAUNCH

*Dr Michele Hill, Chair – Faculty of Youth and Student Psychiatry*

### OUR COLLECTIVE ROLE IN REIMAGINING IRELAND'S YOUTH MENTAL HEALTH SERVICES

*Mr Ian Power – CEO, Spunout*

### NORTHERN IRELAND YOUTH MENTAL HEALTH SURVEY

*Dr Ciaran Mulholland, Consultant Psychiatrist, Northern Health & Social Care Trust; Clinical Director, Northern Ireland Regional Trauma Network*

CHAired BY: PROF MARY CANNON & MS ASHA WOODHOUSE

---

11:30 - 11:50

COFFEE BREAK

O'CAROLAN SUITE

---

11:50 -  
13:20

## NCHD ORAL PRESENTATIONS

TARA SUITE

### POSITIVE AND NEGATIVE SYNDROME SCALE (PANSS). A COMPARISON OF INTERVIEW REPORTS AND INFORMANT RATED PANSS. ARE WE ACCURATELY ASSESSING AND IDENTIFYING UNMET TREATMENT NEED?

*Dr Hania Amin, Central Mental Hospital, Dublin*

### DUBLIN HOSPITAL WORKERS MENTAL HEALTH DURING THE PEAK OF IRELAND'S COVID-19 PANDEMIC

*Dr Conan Brady, Connolly Hospital, Dublin*

### MENTORING & SUPPORT PRACTICES FOR FINAL-YEAR MEDICAL STUDENTS DURING A PANDEMIC- THE 'COVID DOCTORS'

*Dr Gurjot Brar, Triouge Centre, Bridge Street, Portlaoise*

### NEW WAYS OF WORKING: COVID-19 AS A CATALYST FOR CHANGE IN ACUTE MENTAL HEALTH SERVICES

*Dr Genevieve Crudden, Mater Misericordiae Hospital, Dublin*

### PREVALENCE OF SELF-HARM AND SUICIDAL BEHAVIOURS IN YOUNG PEOPLE PRESENTING WITH A FIRST EPISODE OF PSYCHOSIS

*Dr Patrick Fitzpatrick, Newcastle Hospital, Greystones, Co Wicklow*

### PREVALENCE AND CORRELATES OF RESTRICTIVE INTERVENTIONS IN AN IRISH CHILD AND ADOLESCENT PSYCHIATRIC HOSPITAL: A 4-YEAR RETROSPECTIVE STUDY

*Dr Maeve Haran, Department of Psychiatry, Children's Health Ireland, Crumlin Hospital, Dublin*

CHAired BY: DR BRIAN HALLAHAN

---

13:20 - 14:20

LUNCH BREAK

COAST RESTAURANT

---

# THURSDAY AFTERNOON

14:20 - 15:30

PARALLEL SESSIONS Part 1

OR

## SESSION 1

### TARA SUITE

#### HOW PSYCHIATRISTS CAN WORK WITH SHARING THE VISION TO IMPROVE IRISH HEALTHCARE

This session will look at the opportunities to improve our patients' health care journeys available through the roadmap of Sharing the Vision, along with exploring the avenues to achieve these.

**(AVAILABLE ON DEMAND)**

*Dr Siobhan MacHale – Associate Professor, RCSI & Consultant Liaison Psychiatrist, Beaumont Hospital*

#### FOLLOWED BY PANEL DISCUSSION

*Panel: Dr Maeve Doyle, Prof Mary Cannon, Dr Karen O'Connor, Dr Philip Dodd and Dr Gerry McCarney*

**CHAired BY: DR WILLIAM FLANNERY**

## SESSION 2

### GRAHAM BELL SUITE

#### PEER REVIEW (AND HOW TO APPRAISE RESEARCH)

*Prof. John Lyne, Associate Professor RCSI; Consultant Psychiatrist, Newcastle Hospital; Editor-In-Chief, Irish Journal of Psychological Medicine*

#### PUBLISHING, SOCIAL MEDIA & PUBLIC ENGAGEMENT

*Associate Professor Anne Doherty, Mater Misericordiae Hospital; Head of E-Learning and Courses, College of Psychiatrists of Ireland*

At a time when it remains essential that psychiatrists continue to deliver services based on scientific evidence this session will focus on practical aspects of research for psychiatrists. The first part of the session will focus on the importance of peer review and how to appraise research for psychiatrists. The session will assist psychiatrists when interpreting clinical research, as well as enhancing knowledge for the delivery of journal clubs. The second part of the session provides important updates on scientific publishing including discussion of Altmetrics, the changing Open Access landscape, and how psychiatrists can keep up to date with current literature relevant to clinical practice.

**CHAired BY: PROF BRIAN O'DONOGHUE**

15:30 - 15:50

COFFEE BREAK

O'CAROLAN SUITE

# THURSDAY AFTERNOON

15:50 - 17:00

PARALLEL SESSION Part 2

## SESSION 3

### TARA SUITE

#### INTERPERSONAL PSYCHOTHERAPY: A BRIEF OVERVIEW

*Professor Scott Stuart – IPT Institute*

The presentation will focus on the essentials of IPT including when it should be used with patients. We will also review the use of the timeline in IPT, and discuss opportunities for training and supervision in IPT.

#### IPT IN NORTHERN IRELAND

*Dr Philip McGarry, Consultant Psychiatrist and Interpersonal Psychotherapist, Northern Ireland*

#### IPT NOW AND IN THE FUTURE IN THE REPUBLIC OF IRELAND

*Dr Miriam Kennedy, Consultant Psychiatrist, Highfield Healthcare, Dublin*

**CHAired BY: DR PHILIP MCGARRY**

## SESSION 4

### GRAHAM BELL SUITE

#### THE SPECIALIST REHABILITATION UNIT PROGRAMME: ONE PIECE OF THE SOLUTION

*Dr Kevin Foy – Consultant Neuropsychiatrist, Specialist Rehabilitation Unit, Bloomfield Hospital, Dublin*

*Dr Marina Bowe – Consultant in Rehabilitation, SRU, Highfield Hospital, Dublin*

*Dr Donal O'Hanlon, Consultant in Rehabilitation Psychiatry & Clinical Director, Kildare & West Wicklow Mental Health Services*

The HSE Model of Care for People with Severe and Enduring Mental Illness and Complex Needs set out for the first time a road map for the development of a system of rehabilitation within Ireland. It has been estimated that as many as 10% of people entering mental health services will have needs which require rehabilitation and ongoing support. The setting up of Specialist Rehabilitation Units formed part of its recommendations, in addition to recommending development of Community Rehabilitation and Recovery Services, Community Rehabilitation Residences and individual options.

Since 2018, two Specialist rehabilitation units based in Bloomfield and Highfield Hospitals in Dublin have been in operation and have been treating patients from all over Ireland. This talk aims to discuss the SRU programme and its place within the wider MOC care pathway. The chair of the original working group will discuss the model of care. The lead consultants for both services discuss their experiences with developing and providing SRU programmes. The process of referral, together with assessment and structures of the inpatient programmes are discussed together with its interaction with rehabilitation services in the community will be discussed in this very practical session.

**CHAired BY: DR BRIAN FITZMAURICE**

OR

## SESSION 5

### BAIRD SUITE

#### REFLECTIVE PRACTICE – ORGANISED BY THE CPSYCHI AND RCPsYCH NI TRAINEE COMMITTEE

**N.B – MAX 30 pax**

#### LIFE NOTES™: ON WRITING YOUR WORK

*Ms Niamh Bohane – Lifenotes*

Whether you regard it as a calling, or show up every day to pay the bills, or most likely sit somewhere in between, our work takes up much of our life-space. We spend our physical energy and time on it and carry the mental and spiritual load of it.

Can writing about our experience of work be useful? (Spoiler alert: it can!) How do we start?

What barriers do we need to overcome?

What do we do with this writing?

During this writing workshop, we will consider these and other questions and experiment with exercises that explore topics we encounter in our working lives.

You will leave with practices that strengthen your writing muscles, inspiration for further explorations, and permission and encouragement to tell your story, whether you are a new or seasoned writer. Our work lives can be hard but writing about it doesn't have to be. Let your writing practice support and nourish you. This Life Notes workshop will show you how.

**CHAired BY: DR KEVIN LALLY & DR ALEX TODD**

19:00 - 19:30

**CSCST GRADUATION AND EXAMINATION AWARD CEREMONY**  
Photographer from 18:00

TARA SUITE

19:30 - LATE

**CPSYCHI & RCPsYCH NI CONFERENCE DINNER (Dinner ticket required, Pre-booking essential)**  
DRINKS RECEPTION - GRIFFIN LOUNGE FOLLOWED BY CONFERENCE DINNER - COAST RESTAURANT

# FRIDAY MORNING

From 8.30

REGISTRATION & POSTER EXHIBITION

O'CAROLAN SUITE

09:20

## WELCOME ADDRESS

TARA SUITE

Dr Lorcan Martin, College of Psychiatrists of Ireland Vice-President & Conference Academic Coordinator

09:30 -  
11:00

## POST CSCST FELLOWSHIP RESEARCH PRESENTATIONS

TARA SUITE

### TraP

*Dr Zetti Azvee, Consultant Psychiatrist, Dublin North City Mental Health Services, North Strand, Dublin*

A reflection of Zetti's year as a Transplant Psychiatry Fellow

### BREAKING THROUGH BARRIERS; EXPERIENCES FROM MY CAP-ID FELLOWSHIP

*Dr Munira Farah, Post CST fellow, South Lee CAMHS, Cork*

Having worked as a Psychiatry Fellow in Child Adolescent Psychiatry for Intellectual Disability in South Lee 2, Cork services, Munira has first-hand experience of the valuable contribution psychiatrists can make in supporting CAP-ID patients. This presentation is a summary of her journey, experiences and challenges in working with this specialist cohort of patients, who often struggle with additional challenges, such as communication and physical difficulties and have a higher incidence of psychiatric presentations.

### YOUNG ONSET DEMENTIA: A CROSS-DISCIPLINARY POST-CST FELLOWSHIP

*Dr Martha Finnegan, Consultant in Psychiatry of Later Life, Tallaght University Hospital; Clinical Senior Lecturer, TCD*

Martha will discuss the practicalities, challenges and outcomes of completing a one-year Fellowship across four clinical settings in Psychiatry and Neurology

### A FELLOWSHIP IN EARLY INTERVENTION PSYCHOSIS: CLINICAL AND NON-CLINICAL SKILLS

*Dr Sean Naughton, Consultant Psychiatrist, Detect Early Intervention in Psychosis, Dublin*

Sean undertook a post-CSCST fellowship in the DETECT Early Intervention in Psychosis service. He will discuss some aspects of how this experience was useful in the development of specialist clinical skills and in pursuing aspects of career development that were priorities for him, including research. He will also discuss the benefits of his fellowships in the development of non-clinical skills, especially in how these have subsequently been useful for him in his consultant role. Sean and fellowship supervisor have recently published an article about how post-CSCST fellowships can have a role in the transition to consultant hood, and he'll give some examples of this from his recent experience.

CHAired BY: DR AOIBHINN LYNCH

11:00 - 11:30

COFFEE BREAK

O'CAROLAN SUITE

11:30-  
13:00

## THE WAR IN UKRAINE

TARA SUITE

*Dr Dennis Ougrin, Consultant Child and Adolescent Psychiatrist; Enhanced Treatment Service, South London and Maudsley NHS Foundation Trust*

The presentation will focus on the state of mental health services in Ukraine before the full-scale war, the impact of the war on healthcare facilities and the needs of Ukrainian young people arriving in the UK.

## THE STORY SO FAR - FROM A HSE PSYCHOLOGIST WORKING WITH UKRAINIAN & INTERNATIONAL ASYLUM SEEKING APPLICANTS

*Dr Hester O'Conner, Clinical Psychologist, HSE Dublin, Kildare & Wick-*

## MENTAL HEALTH IN EMERGENCY SETTINGS

*Dr Peter Hughes, ACF Afghanistan*

CHAired BY: DR CIARAN MULHOLLAND

13:00 - 14:00

LUNCH BREAK

COAST RESTAURANT



# FRIDAY AFTERNOON

14:00 -  
14:45

## 'CONFESSIONS OF A PARTY ANIMAL - WHY MEDICS REALLY NEED TO TAKE PLEASURE MORE SERIOUSLY'

TARA SUITE

(or how writing a medical memoir helped a 'burned-out' emergency physician recover his mojo)

*Dr Chris Luke - Former Consultant in Emergency Medicine, Adjunct Senior Lecturer in Public Health at UCC, Columnist and Author of 'A Life in Trauma'*

This talk weaves the key points in my memoir with lessons from medical school, and a career-long interest in hedonism and its medical consequences. In short, it is about the most important lessons learned from reflecting on my own career in the context of the current epidemic of medical burnout.

CHAired BY: PROFESSOR ANNE DOHERTY

14:45 -  
15:00

## ANNOUNCEMENT OF PRIZES - NCHD ORAL, NCHD POSTER, MEDICAL STUDENT POSTER, IJPM JOHN DUNNE MEDAL & IJPM ADA ENGLISH MEDAL

TARA SUITE

15:00 -  
16:30

## KEEPING BODY AND MIND TOGETHER: HOW LIAISON PSYCHIATRY CAN INTEGRATE CARE ACROSS THE ACUTE HOSPITAL

TARA SUITE

*Dr James Kinahan, Liaison Psychiatrist, Cork University Hospital & Mercy University Hospital  
Dr Darren McLoughlin, Emergency Medicine Physician, Cork University Hospital & Mercy University Hospital  
Ms Eibhlin Collins, Social Inclusion Advanced Nurse Practitioner, Mercy University Hospital*

*Dr Eric Kelleher, Liaison Psychiatrist, Cork University Hospital & Mercy University Hospital  
Dr Brian Sweeney, Consultant Neurologist, Cork University Hospital  
Ms Sinead Gallagher, Senior Physiotherapist, Cork University Hospital*

This plenary focuses on the expertise and leadership role liaison psychiatry brings in integrating services across the acute hospital to improve patient care.

### INTEGRATED CARE FOR PATIENTS WHO FREQUENTLY ATTEND THE EMERGENCY DEPARTMENT

Frequent emergency department use is an indicator of complex biopsychosocial morbidity which ultimately leads to ineffective care, high service use and cost. Dr James Kinahan describes the development of Interventions to improve morbidity for patients who frequently use an inner-city emergency department through integrating biological, psychological and social care alongside colleagues in emergency medicine (Dr Darren McLoughlin) and inclusion health nursing (Ms Eibhlin Collins).

### INTEGRATED CARE FOR PATIENTS WITH FUNCTIONAL NEUROLOGICAL DISORDERS

Patients with Functional neurological disorders (FND) experience disabling neurological symptoms such as limb weakness which can lead to diagnostic uncertainty, functional impairment and prolonged inpatient stays. Dr Eric Kelleher describes the development of diagnostic and treatment pathways for patients with FND through integrating the role of specialist neurophysiotherapy (Ms Sinead Gallagher) into outpatient care pathways provided by Neurology (Dr Brian Sweeney) and Liaison Psychiatry.

CHAired BY: DR ANNE MARIE O'DWYER

16:30

CLOSE

# BIOGRAPHIES



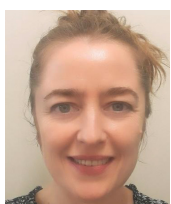
**AZVEE, ZETTI** is a graduate of the National University of Ireland and Penang Medical College and is currently working as a Consultant Psychiatrist in Dublin. She has strong interests in Liaison, Forensic and Homeless Psychiatry. Dr Azvee past work experience includes time in the Western Sahara and the Lebanon with the United Nations. She has been Treasurer of the European Federation of Psychiatric Trainees and Vice Chair of the Trainee Committee for College of Psychiatrists of Ireland. She has a special interest in bridging the gap between primary care and specialist services.



**BOHANE, NIAMH** is the founder of Life Notes™ writing workshops and courses. After seventeen years practicing medicine, almost ten of those as a GP, she lost a heavy-weight bout to burnout and returned to her first love of writing. Informed by a master's degree in creative writing, facilitation of writing and story-telling groups, and years of personal writing experience and research, she now runs exploratory writing workshops and courses, guiding people to connect with and tell their own stories. She believes that witnessing and sharing our stories are some of the most important tasks of our lives, contributing to our understanding of each other and building our collective empathy muscles.



**BOWE, MARINA** has worked in rehabilitation, old age and psychiatry of intellectual disability at consultant level. Her area of interest is in the delivery of recovery focused Mental Health Services. Marina has provided "Recovery Consultancy" to the National Advancing Recovery in Ireland initiative. She leads the SRU in Highfield Hospital.



**COLLINS EIBHLÍN** MSc, BSc (hons) CBT, RGN, DipTropNurs, RNP is an Inclusion Health advanced nurse practitioner at the Mercy University Hospital Cork. She had previously worked internationally in a number of different yet interlinked interest areas, including programme management of a HIV prevention initiative in Angola, and HIV and tropical disease services in London. In a later role as a CNS and CBT therapist in Inclusion Health primary care and addiction services in London, she received a Health Services Journal award in 2016. Inclusion Health recognises the often multiple overlapping risks to health and survival in people marginalised through for example, homelessness or addiction, incarceration, being a Traveller or Roma or living with a stigmatised condition. Eibhlín deals directly with patients attending the hospital, and indirectly through liaison with associated community services, identifying and responding to existing or new health and support needs. She has a particular interest in the influence of adverse childhood experiences on homelessness and addiction, and in the practice of trauma-informed care in service settings.



**DOHERTY, ANNE** MB BCh BAO MMedSc MD FRCPsych; is Associate Professor of Psychiatry at University College Dublin, Consultant Liaison Psychiatrist at the Mater Misericordiae University Hospital, and is the Head of Courses and E-Learning at the College of Psychiatrists of Ireland. She previously held substantive posts at Galway University Hospitals and King's College Hospital, London, where she led the award-winning 3 Dimensions of Care for Diabetes service (3DFD), a multi-disciplinary team for people with poorly controlled diabetes and co-morbid psychiatric disorders. Her research interests include mental disorder in the context of long-term conditions (diabetes and cancer), and suicidal behaviours. She is the Chair of the Faculty of Liaison Psychiatry of the College of Psychiatrists of Ireland, and Vice-President of the Irish Hospital Consultants Association. She is Editor in Chief of the Books Programme at the Royal College of Psychiatrists, London, and Social Media Editor at the Irish Journal of Psychological Medicine.

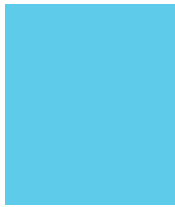


**FARAH, MUNIRA;** completed MBBS in AlNeelain University, Sudan, and Basic Psychiatry training (BST) in University College Cork. She completed HST in Child Psychiatry through UL & UCC. Dr Farah is currently working as Post CSCST fellow in Child & Adolescent Psychiatry of Intellectual Disability in South Lee 2 CAMHS, Cork. She holds a Diploma in CBT (UCC), Diploma in Medical Education (Warwick University), MCPsychI and MRCPsych.



**FINNEGAN, MARTHA** is a Consultant in Psychiatry of Later Life at Tallaght University Hospital, Clinical Senior Lecturer at TCD, and Associate Editor at the Irish Journal of Psychological Medicine. Her PhD focused on cognitive effects of electroconvulsive therapy and ketamine and she subsequently received a Fulbright Scholarship to Yale University and a British Science Association Media Fellowship. She completed a Post-CST Fellowship in Young Onset Dementia and has qualifications in law, palliative care, and neuroimaging with research interests encompassing cognition and capacity-related topics.

# BIOGRAPHIES



**FOY, KEVIN** has recently returned from the UK where he was a Consultant Neuropsychiatrist at the Walton Centre for Neurology and Neurosurgery. He leads the SRU in Bloomfield Hospital where he has introduced a trauma focused and cognitive focused programme for rehabilitation.



**GALLAGHER SINEAD** BSc(Hons) MSc; is a senior physiotherapist working in Cork University Hospital. She completed her undergraduate studies in Queen Margaret University College Edinburgh and subsequently studied for her Masters degree in Gerontology and Neurology in Royal College of Surgeons of Ireland. Her areas of work include geriatrics, amputees and Functional Neurological Disorders (FND).

She has been part of a physiotherapy team interested in functional movement disorders since 2018. This interest stemmed from encountering these patients in the acute phase of their disorders and a realisation that the current services did not meet the needs of this population. In collaboration with CUH colleagues in Neurology and Liaison Psychiatry she was part of a team looking at the care pathway, best practice, the acute rehabilitation phase and supported discharge from hospital.



**HUGHES, PETER** - is a UK based Consultant Psychiatrist who in addition has been working globally for over 15 years with WHO, UN and iNGOs. His main area of expertise is mental health integration into primary care and mental health in humanitarian emergencies. He has worked in over 30 countries in the world including in humanitarian emergencies. He has worked with refugees. He has been an advocate of Global Mental Health in the Royal College of Psychiatrists since 2007. He has worked in Ukraine before the war and supported refugees from there since 2022. He is currently deployed to Kabul, Afghanistan working on mental health nationally. Dr Hughes is therefore unable to attend in person.



**KELLEHER, ERIC**, MB, MRCP, MRCPsych, DIP (COG PSY), PHD, is a Consultant Liaison Psychiatrist at Cork University Hospital and Mercy University Hospital, Cork and Honorary Senior Lecturer with Department of Psychiatry, University College Cork (UCC). A graduate of UCC, he completed basic specialist training in both internal medicine and psychiatry before completing a PhD in the field of autoimmune encephalitis through the Department of Psychiatry, Trinity College Dublin. He completed higher specialist training in psychiatry in Ireland, and intercalated specific training in cognitive behavioural therapy (CBT) during this time. He was awarded the Richard Steeven's fellowship in 2016 where he undertook training in neuropsychiatry and functional neurological disorders at the National Hospital for Neurology and Neurosurgery, Queen Square, London. He is vice-Chair of the Faculty of Liaison Psychiatry and member of the Human Rights and Ethics Committee with the College of Psychiatrists.



**KENNEDY, MIRIAM MB** PhD MRCPsych FCPsychI; is a general adult and later life psychiatrist. She is an IPT supervisor and uses IPT in clinical practice.



**KINAHAN, JAMES**; is currently working as a Consultant in Liaison Psychiatry at Cork University Hospital and Mercy University Hospital and is a Clinical Senior Lecturer with the Department of Psychiatry, University College Cork (UCC)

# BIOGRAPHIES



**LUKE, CHRIS** Qualified MB etc, in 1982, at University College Dublin (UCD). Trained in Ireland, Scotland, Australia, and England. Consultant in Emergency Medicine at the Royal Liverpool University Hospital (RLUH), 1992 - 1999, and Cork University Hospital/Mercy University Hospital (1999-2018); Director of Postgraduate Medical Education (PGME) at both CUH and the RLUH (1995 - 2007), he established a new Education Centre at the RLUH, and a PGME Service running the Grand Rounds, Intern Teaching Programme and the pioneering Final MB Clinical Skills Course at CUH/UCC. Took early retirement due to health issues in 2018 but is forging a new career in medical journalism (a family tradition) and public health education.

Chris has a long-standing passion for initiatives aimed at alleviating the workload of overcrowded hospital emergency departments. Aside from clinical initiatives (fast-tracking, rapid access clinics, patient information cards, etc), these have included multi-agency projects targeting "joy-riders" (racing stolen cars), "nightclub medicine" (the "perils" facing young clubbers), alcohol and substance misuse education. He has led clinical research profiling drug and alcohol-related presentations at EDs in Liverpool and Cork and participated in campaigns to reduce alcohol- and drug-related violence. A regular contributor to the media, he has been an invited speaker at many local and international seminars and conferences, e.g. dotMD: A Festival of Medical Curiosity in NUIG, Galway (2022); UCC School of Public Health MPH Course (2020 - 2022); St John Ambulance (2021); UCC School of Nursing (2020); RCPI (St Luke's Day, 2019); UCC School of Law (2019); Institute of Public Health, Dublin (2020); Royal Colleges of Physicians and Pathologists in London (1997-1998); Alcohol Concern (UK) in Birmingham (2002); the Health Promotion Agency (Belfast, 2002); UK Nursing Council on Alcohol (Liverpool, 2004); Summer Schools at UCC and NUIG; Medical Societies in Cork, London and Brighton;; and Club Health/Substance Misuse conferences in Liverpool, London, Amsterdam, Rimini, Slovenia, Ibiza, Zurich, Prague, Sydney and Dublin.

He has initiated/contributed to papers addressing alcohol, substance misuse, violence and trauma care (e.g. Pirmohammed et al, QJM 2000; Luke et al, A Little Nightclub Medicine, EMJ 2000; Safer Clubbing 2002 [a UK Home Office guide for nightclub owners and patrons]; the 2004 Report of the Irish Parliamentary Joint Committee on Health on Alcohol Misuse among Young People; Night-time Assaults: Using a National Emergency Department Monitoring System to Predict Occurrence, Target Prevention and Plan Services [Bellis, Luke et al; BMC Public Health, 2012]) and he co-hosted Club Health 2017 in Dublin Castle.

His 'regular' public health activities have included lectures ("An A to Z of Drink and Drugs") to police (at Templemore Garda College), parents, healthcare professionals and activists, in Cork and Dublin; the Club Cork project (involving on-site training for club/pub staff) in the early 'noughties'; and being "the doctor" on the RTE Today Programme and the Pat Kenny Show (Newstalk fm).



**LYNE, JOHN** is an Associate Professor in Royal College of Surgeons in Ireland and Consultant Psychiatrist in Wicklow Mental Health Services. Dr Lyne has been Editor-in-Chief of Irish Journal of Psychological Medicine since 2016. He has completed doctoral research on negative symptoms in early psychosis and is authored on over 70 peer reviewed scientific papers.



**MACHALE, SIOBHAN** has worked as a Consultant Liaison Psychiatrist for 25 years, initially in the Royal Infirmary of Edinburgh, before returning to her current post in Beaumont Hospital in 2006. She is an Associate Clinical Professor in the Royal College of Surgeons of Ireland, and a Fellow of the Royal College of Psychiatrists, Royal College of Physicians of Ireland and the Royal College of Physicians of Edinburgh. As a Liaison Psychiatrist, her primary role is in the care and management of the mental health needs of patients in the general hospital setting, including the Emergency Department. She previously chaired the National Clinical Programme in the Management of SelfHarm. She is the current CPsych I representative on the National Implementation Monitoring Committee (NIMC) for Sharing the Vision and chair of the NIMC Women's Specialist Mental Health Group.



**MCGARRY, PHILIP** OBE FRCPsych, Belfast, a former Chair of RCPsychNI, is an IPT therapist and trainer.



**MCLOUGHLIN, DARREN** is a Consultant in Emergency Medicine in Mercy University Hospital and Cork University Hospital. He is also the Clinical Lead in Emergency Medicine in Mercy University Hospital and a Senior Clinical Lecturer in University College Cork. With a special interest in patient safety and governance, he chairs the National Patient Safety Alert working group with the HSE's National Quality and Safety Directorate.

# BIOGRAPHIES



**MULHOLLAND, CIARAN** is a Consultant Psychiatrist with the Northern Health and Social Care Trust and a Senior Lecturer in Psychiatry at Queen's University. He is co-lead for an innovative psychosis prevention service for young people in the Northern Trust and is Clinical Director of the Northern Ireland Regional Trauma Network. He has provided advice to the Commission for Victims and Survivors (CVS) on the needs of those affected by the Troubles and sits on a working group tasked with the delivery of the new Victims Payment. He is a member of the Contact Armed Forces group which co-ordinates clinical services for veterans of the armed services with mental health problems across Northern Ireland, England, Scotland and Wales. Dr Mulholland played a pivotal role in the response to the Covid-19 pandemic, sitting on the Mental Health and Well-Being Surge Cell and writing a widely utilised review of the impact of the pandemic on mental health. He is also a member of the Regional Ethics Forum and with others drafted the published Covid-19 Ethical Guidance Framework document. Dr Mulholland chairs the Academic Faculty for the RCPsych NI.



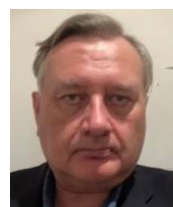
**NAUGHTON, SEAN** is a Consultant Psychiatrist in the DETECT Early Intervention in Psychosis Service in South Dublin, where he completed a post-CSCST fellowship in 2022. His interests include training and clinical education (MSc, University of Galway) and service development and integration (currently pursuing an MD in UCD).



**O'CONNOR, HESTER** is a Clinical Psychologist and lead for Psychosocial supports in HSE Community Health Organisation no.7, in Dublin, Kildare and West Wicklow. Hester worked in the UK for over twenty years before returning to Ireland in 2009. In March 2022 Hester moved from her post as manager of the psychology service to her current role as Psychosocial lead in post Covid.



**O'DONOGHUE, BRIAN** is a Consultant Psychiatrist at St Vincent's University Hospital and Dublin South-East Mental Health service and an associate professor with UCD & the University of Melbourne. Brian returned to Ireland in 2020 after working with the Early Psychosis Prevention and Intervention Centre (EPPIC) in Melbourne for nearly ten years. He has been an investigator on five large clinical trials in the area of early psychosis and was awarded an Early Career Fellowship by the National Health and Medical Research Council (NHMRC) in Australia (2018-2021). He is an associate editor of Early Intervention in Psychiatry and the Irish Journal of Psychological Medicine and has over 125 publications in peer-reviewed journals. Brian was a member of the Lancet Psychiatry commission on 'Protecting Physical Health in Mental Illness'.



**O'HANLON, DONAL** is a Consultant in Rehabilitation Psychiatry and clinical director of Kildare and West-Wicklow Mental Health Services. He was the Chair of the Working Group who developed the Model of Care.



**OUGHRIN, DENNIS** - graduated from medical school in Ukraine in 1998 and came to the Maudsley Hospital in the UK to undertake his post-graduate training in child and adolescent psychiatry. He worked as a Consultant Child and Adolescent Psychiatrist establishing and leading intensive community care services at South London and Maudsley NHS Foundation Trust. Dr Ougrin also led the MSc in Child and Adolescent Mental Health at King's College London and acted as the Chief Investigator of major NIHR, MRC and charity-funded studies in the field of self-harm and intensive community care services. In 2018-2020 he was the editor-in-chief of Child and Adolescent Mental Health, a key clinical journal in child and adolescent psychiatry, psychology and allied disciplines. In September 2021 he was appointed to lead the Youth Resilience Research Unit at Queen Mary University of London.

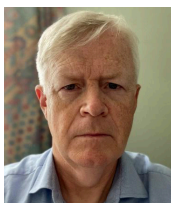
Dr Ougrin leads a programme of global mental health studies aimed at developing community mental health services in Ukraine and other Low- and Middle-Income Countries. His main professional interests include the prevention of Borderline Personality Disorder and effective interventions for self-harm in young people.

He is the author of Therapeutic Assessment, a novel model of assessment for young people with self-harm, he also developed and tested an Intensive Community Care Service model for young people with severe psychiatric disorders called Supported Discharge Service. The model was evaluated in the first randomised controlled trial of an intensive community care service for young people in the UK. The results of the trial informed the development of intensive community care services in the UK and internationally. He has expertise in conducting randomised controlled trials in the fields of psychological therapy and mental health service models. Dr Ougrin also works on developing modular psychotherapeutic interventions for self-harm and on understanding the pathophysiology of self-harm in young people.

# BIOGRAPHIES



**STUART, SCOTT** is a psychiatrist and an Emeritus Professor in the Departments of Psychiatry, Psychology, and Obstetrics and Gynecology at the University of Iowa (USA) as well as an Adjunct Clinical Professor of Psychiatry and Behavioral Sciences in the Keck School of Medicine at the University of Southern California, Los Angeles. He has been active in clinical work, education and research in the areas of Interpersonal Psychotherapy and perinatal psychiatry for nearly three decades. Dr. Stuart completed his medical training at the University of Kansas, followed by internship at the University of Pittsburgh. He has received several teaching awards, including the John Clancy Teacher of the Year Award (University of Iowa). Dr. Stuart is the Founder and Director of the Interpersonal Psychotherapy Institute. He has also authored a number of articles on IPT, and is the co-author of *Interpersonal Psychotherapy: A Clinician's Guide* (2nd ed), as well as *IPT Handbooks* for adults, adolescents, and groups. He has been conducting workshops and training in IPT internationally for over 20 years.



**SWEENEY, BRIAN** qualified in medicine from University College Dublin in 1986 and interned at St Vincent's University Hospital. He subsequently completed basic specialist training in the St Vincent's/Mater SHO scheme. He went on to neurology and psychiatry training in Cork University Hospital, St Patrick's Hospital, Dublin, and then in London as research fellow, registrar and senior registrar at the Middlesex Hospital, St Mary's Hospital and the National Hospital for Neurology and Neurosurgery, Queen Square. He returned to the National Neuroscience Centre at Cork University Hospital/University College Cork as a consultant neurologist and clinical senior lecturer in June 1996. He has had a major clinical workload but also research interests in areas such as Functional Neurological Disorder, Multiple Sclerosis, Epilepsy, history of neurology and medical education. He is a former National Speciality Director for Neurology at the Royal College of Physicians of Ireland and the current Dean of the Irish Institute of Clinical Neuroscience.



**WEISER, MARK** is Chairman of the Division of Psychiatry in the Sheba Medical Center, the largest hospital in Israel, rated among the top ten hospitals in the world by Newsweek. He is Associate Director for Treatment Trials in the Stanley Medical Research Institute (SMRI, <http://www.stanleyresearch.org/>), a charity which funds clinical trials in schizophrenia and bipolar disorder. He has performed and published tens of RCTs in schizophrenia, bipolar disorder, depression and dementia, both academic and industry-sponsored. He is on the board of SIRS, on the SPC of ISCTM, and a fellow of ACNP. He has published extensively on the epidemiology of severe mental illness using data bases both in Israel and in the US.

# NCHD POSTER COMPETITION

## 1. IMPACT OF THE COVID-19 PANDEMIC ON THE MENTAL HEALTH OF HEALTHCARE WORKERS IN A PSYCHIATRIC HOSPITAL: A CROSS-SECTIONAL STUDY

**MOHAMED ALSAFFAR<sup>1</sup>**, MIRIAM KENNEDY<sup>2</sup>, LISA O'FARRELL<sup>2</sup>,  
YVONNE KEHOE<sup>2</sup>

<sup>1</sup> Beaumont Hospital, Dublin

<sup>2</sup> Highfield Healthcare, Dublin

## 2. IMPROVING THE PRACTICE OF METABOLIC MONITORING IN PATIENTS PRESCRIBED ANTIPSYCHOTIC MEDICATION IN A COMMUNITY MENTAL HEALTH TEAM

**LORRAINE ANDERSON<sup>1</sup>**, NIAMH QUIGLEY<sup>2</sup>, ANGELA CARBALLEDO<sup>3</sup>

<sup>1</sup> Linn Dara, Cherry Orchard Hospital, Dublin

<sup>2</sup> Department of Psychiatry, St James' Hospital, Dublin

<sup>3</sup> North Dublin Mental Health Services, Coolock Primary Care, Kilmore, Dublin

## 3. AN AUDIT OF THE CLINICAL MONITORING OF EXTRA-PYRAMIDAL SYMPTOMS (EPS) IN A MENTAL HEALTH SERVICE (MHS)

**REBEKAH AUBRY<sup>1</sup>**, MICHÉAL MORGAN<sup>2</sup>, KEVIN KILBRIDE<sup>3</sup>,  
TOM HASTINGS<sup>4,5,6</sup>

<sup>1</sup> Lucena CAMHS Clinic, Orwell Road, Dublin

<sup>2</sup> Grangegorman CAMHS, Grangegorman Primary Care Centre, Dublin

<sup>3</sup> Program for the Homeless Mental Health Service, Usher's Island Day Hospital, Dublin

<sup>4</sup> Consultant psychiatrist, Halton Healthcare, Oakville, Ontario, Canada

<sup>5</sup> Associate Clinical Professor, Department of Psychiatry, McMaster University, Hamilton, Ontario, Canada

<sup>6</sup> Lecturer, Department of Psychiatry, University of Toronto, Toronto, Ontario, Canada

## 4. AUDIT ON ANNUAL ECG FOLLOW UP IN PATIENTS ON DEPOT INJECTIONS

**JELENA VOJNIC BARISIC<sup>1</sup>**, MICHELE BRANNIGAN<sup>2</sup>, OGHENEVWOKE AKPUBI<sup>3</sup>

<sup>1</sup> St Stephen's Hospital, Sarsfieldcourt, Glanmire, Cork

<sup>2</sup> South Tipperary Mental Health Services, St Luke's Hospital, Clonmel, Co. Tipperary

<sup>3</sup> Carraig Oir Mental Health Service, William Street, Cashel, Co Tipperary

## 5. A LOT DONE MORE TO DO. EARLY INTERVENTION FOR PSYCHOSIS IN CAMHS INPATIENT UNIT, MERLIN PARK

**SALIMA BOUDJELLALI<sup>1</sup>**, SARA BURKE<sup>1</sup>, OMAR RAOUF MOUSSAOUI<sup>2</sup>,  
EAMON RAJI<sup>1</sup>, CATHEIRNE O'BRIEN<sup>1</sup>

<sup>1</sup> Merlin Park University Hospital, Galway

<sup>2</sup> Sofia Medical University, Bulgaria

## 6. WORSENING OF MENTAL HEALTH OUTCOMES IN NURSING HOME STAFF DURING THE COVID-19 PANDEMIC IN IRELAND

**CONAN BRADY<sup>1</sup>**, DECLAN MCLOUGHLIN<sup>2</sup>

<sup>1</sup> Connolly Hospital, Dublin

<sup>2</sup> Trinity College, Dublin

## 7. A CASE SERIES INVOLVING THE USE OF NG TUBE TO ADMINISTER PSYCHOTROPIC MEDICATION TO CATATONIC ADOLESCENTS WITH SEVERE MENTAL ILLNESS IN GALWAY CAMHS INPATIENT UNIT

**SARA BURKE<sup>1</sup>**, SALIMA BOUDJELLALI<sup>1</sup>, CATHERINE O'BRIEN<sup>1</sup>, EAMON RAJI<sup>1</sup>

<sup>1</sup> CAMHS In-patient Unit, Merlin Park, Galway

## 8. RESCRIBING ANTIPSYCHOTICS FOR NON-COGNITIVE SYMPTOMS OF DEMENTIA - A FULL AUDIT CYCLE

**SINEAD CARR<sup>1</sup>**, ODILE HALLY<sup>2</sup>

<sup>1</sup> West Blanchardstown Adult Mental Health Service, Dublin

<sup>2</sup> Mental Health Services for Older Persons, Ashlin Centre, Beaumont, Dublin

## 9. PATIENT SATISFACTION WITH REMOTE CONSULTATIONS: A SURVEY OF PATIENTS ATTENDING A COMMUNITY MENTAL HEALTH SERVICE

**SINEAD CARR<sup>1</sup>**, FIONN KELLY<sup>2</sup>, BARBARA FARRAGHER<sup>2</sup>

<sup>1</sup> West Blanchardstown Mental Health Service, Dublin

<sup>2</sup> An Tain Mental Health Services, Navan, Co Meath

## 10. A COMPLETED AUDIT CYCLE OF PRESCRIBING PRACTICE OF PSYCHOTROPIC MEDICATION IN THE ST PATRICK'S MENTAL HEALTH SERVICES ADOLESCENT OUTPATIENT CLINIC

**EVA CARTPER<sup>1</sup>**, SOPHIA MORGAN<sup>2</sup>, DAVID MCHUGH<sup>2</sup>

<sup>1</sup> Department of Psychological Medicine, St James' Hospital, Dublin

<sup>2</sup> St Patrick's University Hospital, Dublin

## 11. THE LOST GIRLS AND THE DANGERS OF STEREOTYPES: A CASE SERIES OF WOMEN DIAGNOSED WITH ADHD IN ADULTHOOD

**SHANNON CLEARY<sup>1</sup>**, SAMIRA HAYES<sup>1</sup>, JULIE KENNELLY<sup>1</sup>

<sup>1</sup> Kerry Mental Health Services, Tralee, Co Kerry

## 12. ASSOCIATION OF ABNORMAL LEVELS OF NEUROFILAMENT LIGHT CHAIN PROTEIN (NFL) WITH ATTENTION IN PSYCHIATRIC INPATIENTS

**IULIAN COADA<sup>1</sup>**, HANNAH EINSTEIN<sup>2</sup>, BRIAN MORAN<sup>2</sup>, KAREN FINN<sup>2</sup>,  
GERALDINE MCCARTHY<sup>1</sup>, DIMITRIOS ADAMIS<sup>1</sup>

<sup>1</sup> Sligo Mental Health Services, Educational Centre, Clarion Road, Sligo

<sup>2</sup> Atlantic Technological University ATU, Galway

## 13. A PILOT STUDY OF A NEW SCALE FOR MEASURING CLINICAL OUTCOMES IN ADULT ADHD CLINICS

**IULIAN COADA<sup>1</sup>**, JAKE TIERNAN<sup>1</sup>, BLÁNAID GAVIN<sup>2</sup>, FIONA MCNICHOLAS<sup>2</sup>,  
DIMITRIOS ADAMIS<sup>1</sup>

<sup>1</sup> Adult ADHD, Waterfront House, Bridge Street, Sligo

<sup>2</sup> UCD, Dublin

## 14. SLEEP DISORDERS IN ADULT ATTENTION DEFICIT-HYPERACTIVITY DISORDER (ADHD)

**IULIAN COADA<sup>1</sup>**, JAKE TIERNAN<sup>2</sup>, BLÁNAID GAVIN<sup>3</sup>, FIONA MCNICHOLAS<sup>3</sup>,  
DIMITRIOS ADAMIS<sup>1</sup>

<sup>1</sup> Sligo Mental Health Services, Educational Centre, Sligo

<sup>2</sup> Sligo Mental Health Services, Sligo

## 15. FANTASY FOOTBALL (SOCCER) PLAYING AND INTERNET ADDICTION AMONG ONLINE FANTASY FOOTBALL PARTICIPANTS: A DESCRIPTIVE SURVEY STUDY

**DAVID COLUMB<sup>1</sup>**, COLIN O'GARA<sup>2</sup>, MARK GRIFFITHS<sup>3</sup>

<sup>1</sup> Linn Dara CAMHS North Kildare, HSE Primary Care Centre, Celbridge, Co Kildare

<sup>2</sup> St John of God Hospital, Dublin

<sup>3</sup> Nottingham Trent University, Nottingham, United Kingdom

## 16. A STUDY EXAMINING THE EXPERIENCES OF CLINICIANS IN DISCUSSING OVERWEIGHT AND OBESITY ISSUES WITH PATIENTS AND EXPLORING THE NEED FOR OBESITY INTERVENTIONS IN A PAEDIATRIC MENTAL HEALTH SERVICE

**KAREN CONLAN<sup>1</sup>**, JANE MCGRATH<sup>2</sup>

<sup>1</sup> Linn Dara CAMHS, South Kildare

<sup>2</sup> ADMIRE ADHD Service, Linn Dara CAMHS

## 17. SECOND-GENERATION ANTIPSYCHOTICS: WEIGHT GAIN AND CARDIOMETABOLIC COMPLICATIONS - DO DIFFERENT FACTORS IMPACT WEIGHT GAIN AND METABOLIC COMPLICATIONS?

**KAREN CONLAN<sup>1</sup>**, JANE MCGRATH<sup>2</sup>, LOUISE GALLAGHER<sup>3</sup>

<sup>1</sup> Linn Dara CAMHS, South Kildare

<sup>2</sup> ADMIRE ADHD Service, Linn Dara CAMHS

<sup>3</sup> Department of Psychiatry, The Hospital for Sick Children, Toronto, Ontario, Canada

## 18. CLINICAL AUDIT ON PREVALENCE AND MANAGEMENT OF HYPONATRAEMIA IN AN INTELLECTUAL DISABILITY RESIDENTIAL POPULATION

**JOSEPH DOYLE<sup>1</sup>**, AFWAN WAHAB<sup>1</sup>, KAROL LAFFAN<sup>2</sup>, NIAL CLANCY<sup>2</sup>,  
HAMI SADI<sup>1</sup>

<sup>1</sup> Stewart's Care, Palmerstown, Dublin

<sup>2</sup> Waterstown Practice, Mill Lane, Palmerstown, Dublin

## 19. THE SERVICE USER EXPERIENCE OF THE FIRST YEAR OF THE MENTAL HEALTH MIDWIFERY SERVICE AT SLIGO UNIVERSITY HOSPITAL

**MOHANAD ELTIEB<sup>1</sup>**, ELIZABETH GETHINS<sup>1</sup>, MAIREAD BYRNE<sup>2</sup>

<sup>1</sup> Liaison Mental Health Team, Sligo University Hospital, Sligo

<sup>2</sup> Perinatal Mental Health Midwife, Sligo University Hospital, Sligo

## 20. A RECRUITMENT CRISIS IN PSYCHIATRY: EXAMINING ATTITUDES OF MEDICAL STUDENTS TOWARDS PSYCHIATRY BEFORE AND AFTER PSYCHIATRY EXPOSURE USING THE ATP-30 SCALE

**PATRICK FITZPATRICK<sup>1</sup>**, LAURA NAGLE<sup>2</sup>, CRONAN MORRISON<sup>3</sup>,

DAVID KILLILEA<sup>3</sup>, ALLYS GUERANDEL<sup>2</sup>

<sup>1</sup> Newcastle Hospital, Greystones

<sup>2</sup> St Vincent's University Hospital, Dublin

<sup>3</sup> UCD SMMS, Belfield, Dublin

## 21. MEN IN PRISON REFERRED FOR PSYCHIATRIC ADMISSION: OUTCOMES DURING A FORENSIC BED CRISIS OVER FIVE YEARS 2015-2019

**MARGARET GALLAGHER<sup>1</sup>**, CONOR O'NEILL<sup>2</sup>, DAMIAN SMITH<sup>2</sup>

<sup>1</sup> St Vincent's University Hospital, Elm Park, Dublin

<sup>2</sup> Cloverhill Prison, Dublin

## 22. THE PORTRAYAL OF MENTAL HEALTH IN IRISH MAINSTREAM NEWS MEDIA

**MARGARET GALLAGHER<sup>1</sup>**, CAITLIN O'LEARY<sup>1</sup>, AMY MCGREAL BALLONE<sup>2</sup>,  
RICHARD DUFFY<sup>3</sup>

<sup>1</sup> St Vincent's University Hospital, Dublin

<sup>2</sup> RCSI, Dublin

<sup>3</sup> Mater Misericordiae University Hospital, Dublin

**23. EATING DISORDERS – HSE MODEL OF CARE FOR IRELAND. STANDARDS OF PRACTICE IN MANAGEMENT OF RESTRICTING EATING DISORDERS IN A PAEDIATRIC HOSPITAL**

**NIMANTHA GAMAGE<sup>1</sup>**, MUTAHIR GULZAR<sup>1</sup>, CAROLINE MCGRATH<sup>1</sup>, PATRICIA BYRNE<sup>1</sup>

<sup>1</sup> Tallaght University Hospital, Dublin

**24. PREVALENCE AND PREDICTORS OF ADMISSION AT THE TIME OF PRESENTATION IN FIRST EPISODE PSYCHOSIS**

**LOUISA GANNON<sup>1</sup>**, BRIAN O'DONOGHUE<sup>1,2,3</sup>

<sup>1</sup> St Vincent's University Hospital, Dublin

<sup>2</sup> University College Dublin

<sup>3</sup> University of Melbourne, Australia

**25. EMERGING MENTAL HEALTH NEED IN INDIVIDUALS INFECTED WITH THE 2019 NOVEL CORONAVIRUS (COVID-19)- A LONGITUDINAL COHORT STUDY**

**EOIN GEARY<sup>1,2</sup>**, CORINNA SADLER<sup>3,4</sup>, LIAM O'MAHONEY<sup>5</sup>, ERIC KELLEHER<sup>2,5</sup>

<sup>1</sup> Home Based Crisis Team, North Lee Mental Health Service, St Mary's Health Campus, Cork

<sup>2</sup> Department of Psychiatry and Neurobehavioural Science, University College Cork

<sup>3</sup> Department of Infectious Diseases, Cork University Hospital, Cork

<sup>4</sup> Department of Medicine, University College Cork

<sup>5</sup> Alimentary Pharmabiotic Centre, University College Cork

**26. AN AUDIT OF ANTIPSYCHOTIC MONITORING IN A COMMUNITY FORENSIC RECOVERY AND REHABILITATION (FR&R) PSYCHIATRIC POPULATION**

**AOIFE GORDON<sup>1</sup>**, ORLAGH DEIGHAN<sup>2</sup>, JENNIE MOORE<sup>3</sup>, NIAL HURST<sup>3</sup>

<sup>1</sup> St Patrick's University Hospital, Dublin

<sup>2</sup> Linn Dara CAMHS

<sup>3</sup> National Forensic Mental Health Service, Dublin

**27. TOBACCO FREE CAMPUSES – A PIPE DREAM? A SURVEY OF CURRENT SMOKING CESSATION PRACTICE IN MENTAL HEALTH UNITS IN IRELAND**

**COLM HARRINGTON<sup>1</sup>**, ELAINE WALSH<sup>2</sup>

<sup>1</sup> St Frances Clinic, Temple Street Children's Hospital, Dublin

<sup>2</sup> Sacred Heart Hospital, Castlebar, Co Mayo

**28. HEALING FOR THE SOUL – BIBLIOTHERAPY IN IRISH MENTAL HEALTH UNITS**

**COLM HARRINGTON<sup>1</sup>**

<sup>1</sup> St Frances Clinic, Temple Street Children's Hospital, Dublin

**29. LITHIUM MONITORING IN GALWAY SOUTH SECTOR – FULL AUDIT CYCLE**

**COLM HARRINGTON<sup>1</sup>**, NATASSHA GOH<sup>2</sup>, CHERIAN MATHEW<sup>2</sup>, SHANE MCINERNEY<sup>2</sup>

<sup>1</sup> Temple Street Children's Hospital, Dublin

<sup>2</sup> Galway University Hospital

**30. ADMISSIONS TO THE NATIONAL FORENSIC MENTAL HEALTH SERVICE, CENTRAL MENTAL HOSPITAL DUNDRUM, BEFORE, DURING AND AFTER THE COVID-19 PANDEMIC: CHANGES IN THE NEED FOR SECURITY AND URGENCY OF NEED FOR ADMISSION**

**MUHAMMAD UMER IQBAL<sup>1</sup>**, ORLA BYRNE<sup>1</sup>, HARRY KENNEDY<sup>1</sup>, MARY DAVOREN<sup>1</sup>

<sup>1</sup> Central Mental Hospital, National Forensic Mental Health Service, Dublin

**31. STRATIFIED THERAPEUTIC SECURITY AND UNDERSTANDING BACKWARDS CARE PATHWAY MOVES. A 5-YEAR RETROSPECTIVE COHORT ANALYSIS FROM THE DUNDRUM FORENSIC REDEVELOPMENT EVALUATION (D-FOREST) STUDY**

**LISA JORDAN<sup>1</sup>**, GENEVIEVE CRUDDEN<sup>1</sup>, DAMIAN MOHAN<sup>2</sup>, HARRY KENNEDY<sup>2</sup>, MARY DAVOREN<sup>1</sup>

<sup>1</sup> National Forensic Mental Health Service, Central Mental Hospital, Dublin

<sup>2</sup> Trinity College Dublin

**32. COMPLYING WITH THE MENTAL HEALTH COMMISSION'S REGULATION 19: GENERAL PHYSICAL HEALTH CRITERIA – AN INTERDISCIPLINARY APPROACH**

**MUHAMMAD KAMRAN<sup>1</sup>**, ASHBAL BIN YASIR<sup>1</sup>, GURJOT BRAR<sup>1</sup>, CAROLINE GRANT<sup>1</sup>, HENRY O'CONNELL<sup>1</sup>, JAMES DALY<sup>1</sup>, MAURICE GERVIN<sup>1</sup>

<sup>1</sup> Department of Psychiatry, Midlands Regional Hospital, Portlaoise, Co Laois

**33. PANHYPOPITUITARISM – A PSYCHIATRIC DIAGNOSIS**

**KATE KEENAN<sup>1</sup>**, AIDEEN MORAN<sup>1</sup>

<sup>1</sup> Department of Psychiatry, Connolly Hospital, Blanchardstown, Dublin

**34. SUBSTANCE USE AND SELF-HARM EMERGENCY DEPARTMENT PRESENTATIONS DURING COVID19: EVIDENCE FROM A NATIONAL CLINICAL PROGRAMME FOR SELF-HARM**

**ERICA MAGUIRE<sup>1</sup>**

<sup>1</sup> Athy Mental Health Services, Wicklow

**35. IMPACT OF COVID-19 ON REFERRALS TO PSYCHIATRY OF OLD AGE**

**ROISIN MCCAFFERTY<sup>1</sup>**, DONAGH KELLEHER<sup>2</sup>, MOH ALSAFFAR<sup>3</sup>, SINEAD CARR<sup>4</sup>, TRACEY KIERNAN<sup>5</sup>, CAITRIONA CROWE<sup>6</sup>, ELAINE GREENE<sup>6</sup>, ODILE HALLY<sup>6</sup>

<sup>1</sup> St. Vincent's Hospital, Fairview, Dublin

<sup>2</sup> Lucan CAMHS, Linn Dara, Cherry Orchard Hospital, Dublin

<sup>3</sup> Liaison Psychiatry Service, Beaumont Hospital, Dublin

<sup>4</sup> West Blanchardstown Mental Health Service, Primary Care Centre, Blanchardstown, Dublin

<sup>5</sup> Willow Grove Day Hospital, Ashlin Centre, Beaumont, Dublin

<sup>6</sup> MISA, St James's Hospital, Dublin

**36. AN EVALUATION OF SERVICE USER SATISFACTION: SOUTH LEE CRHT 2016-2020**

**SIOFRA MCDONAGH<sup>1</sup>**, SEAN CROWLEY<sup>2</sup>, DEIRDRE CAROLAN<sup>3</sup>, KAREN O'CONNOR<sup>3</sup>

<sup>1</sup> City General Hospital, Infirmary Road, Cork

<sup>2</sup> Mercy University Hospital, Cork

<sup>3</sup> Home Based Treatment Team, Blackrock Primary Healthcare Centre, Mahon, Cork

**37. THE ROLE OF LEADERSHIP IN IMPROVING PHYSICAL HEALTH OUTCOMES IN PATIENTS WITH CHRONIC AND ENDURING MENTAL ILLNESS: A SCOPING REVIEW**

**EIMEAR MCGUIRE<sup>1</sup>**, MUSAAB ELZAIN<sup>2</sup>, HELEN CLARK<sup>3</sup>, CATHERINE DOLAN<sup>1</sup>, GERALDINE MCCARTHY<sup>1</sup>

<sup>1</sup> Sligo/Leitrim Mental Health Services, Sligo

<sup>2</sup> Mid-West Mental Health Service, Limerick

<sup>3</sup> Sligo University Hospital Library, Sligo

**38. PHYSICAL HEALTHCARE SCREENING AND INTERVENTIONS FOR INDIVIDUALS WITH FIRST EPISODE PSYCHOSIS: A PILOT PROJECT**

**PETRA MCLOUGHLIN<sup>1</sup>**, EMILY GAINÉ<sup>2</sup>, DONAGH O'NEILL<sup>1</sup>

<sup>1</sup> Sligo/Leitrim Mental Health Services

<sup>2</sup> Sligo Medical Academy

**39. SAFETY PLANNING GROUP INTERVENTION (SPGI) DELIVERED WITH PEOPLE EXPERIENCING SUICIDALITY IN AN ADULT ACUTE MENTAL HEALTH UNIT**

**EIMEAR MCMAHON<sup>1</sup>**, HANNAH WOOD<sup>1</sup>, SIOFRA MCCRUM<sup>1</sup>, ANNA GLYNN<sup>2</sup>, JOHN BOGUE<sup>3</sup>, MARY O'SULLIVAN<sup>4</sup>, JIM DUGGAN<sup>5</sup>, KAREN YOUNG<sup>6</sup>, RUTH MELIA<sup>7</sup>, SHANE MCINERNEY<sup>1</sup>

<sup>1</sup> Adult Acute Mental Health Unit, University Hospital Galway

<sup>2</sup> Occupational Therapy Department, Adult Acute Mental Health Unit, University Hospital Galway

<sup>3</sup> Department of Psychology, National University of Ireland

<sup>4</sup> Resource Officer for Suicide Prevention, HSE West

<sup>5</sup> College of Engineering and Informatics

<sup>6</sup> Insight Centre for Data Analytics, National University of Ireland, Galway

<sup>7</sup> CAMHS Mid-West

**40. EXPERIENCES OF SELF-HARM AND SUICIDALITY IN A COMMUNITY SAMPLE OF IRISH TRAVELLERS**

**ROISIN MCMANUS<sup>1</sup>**, MARK MCGOVERN<sup>2</sup>, KEZANNE TONG<sup>3</sup>, JOHN O'BRIEN<sup>4</sup>, ANNE DOHERTY<sup>5</sup>

<sup>1</sup> Cheeverstown, Tymon Kilnaneanagh Primary Care Centre, Tallaght, Dublin

<sup>2</sup> Te Whatu Ora – Health New Zealand, Capital and Coast, Hutt Valley and Wairarapa Hospitals

<sup>3</sup> Central Mental Hospital, Dublin

<sup>4</sup> Exchange House, Strand Street Great, Dublin

<sup>5</sup> Mater Misericordiae Hospital, Dublin

**41. AUDIT SURVEY OF WHETHER SAINT JOSEPH'S AIPU FAIRVIEW IS CARRYING OUT APPROPRIATE MEDICAL MONITORING FOR INPATIENTS RECEIVING TREATMENT FOR EATING DISORDERS**

**MICHEAL MORGAN<sup>1</sup>**, ENAS MOHAMED<sup>2</sup>, DESHWINDER SIDHU<sup>3</sup>, IAN MCLELLAND<sup>4</sup>, ZARINA MOKHTAR<sup>5</sup>

<sup>1</sup> Grangegorm CAMHS, Grangegorm Primary Care Centre, Dublin

<sup>2</sup> Department of Psychiatry, St. James's Hospital, Dublin

<sup>3</sup> Sligo/Leitrim Adult Community Mental Health Services, Markievicz House, Sligo

<sup>4</sup> St. Joseph's Adolescent Inpatient Unit, St. Vincent's Hospital, Fairview, Dublin

<sup>5</sup> Dublin North City & County Adolescent Day Hospital, North Great George's Street, Dublin

**42. BAN THE BASH IN IRISH MEDICAL SCHOOLS – HIDDEN CURRICULUM AND THE BADMOUTHING OF MEDICAL SPECIALTIES**

**NIAMH MURPHY<sup>1</sup>**, DYLAN VIANI-WALSH<sup>2</sup>, SHANE EVANS<sup>3</sup>, KIERAN C MURPHY<sup>4</sup>, ALLY GUERANDAL<sup>3</sup>, BRIAN HALLAHAN<sup>5</sup>, JOHN LALLY<sup>6,7</sup>

<sup>1</sup> Dublin North City & County Child & Adolescent Mental Health Service (Ballymun Civic Centre, Dublin)

<sup>2</sup> Department of Surgery, Royal College of Surgeons in Ireland, Dublin

<sup>3</sup> Department of Psychiatry, University College Dublin

<sup>4</sup> Department of Psychiatry, Beaumont Hospital, Dublin

<sup>5</sup> Department of Psychiatry, University of Galway

<sup>6</sup> Department of Psychiatry, Mater Misericordiae University Hospital, Dublin

<sup>7</sup> Department of Psychosis Studies, Institute of Psychiatry, Psychology and Neuroscience, King's College London



**43. COMPOSITIONAL AND FUNCTIONAL ALTERATIONS IN THE ORAL AND GUT MICROBIOTA IN PATIENTS WITH PSYCHOSIS OR SCHIZOPHRENIA: A SYSTEMATIC REVIEW AND META-ANALYSIS**

**NUALA MURRAY<sup>1</sup>, KAREN O'CONNOR<sup>2</sup>, GERARD CLARKE<sup>3</sup>, ALI KHASHAN<sup>4</sup>, SUKAINAH AL KHALAF<sup>4</sup>**

<sup>1</sup> Sliabh Mis, University Hospital Kerry

<sup>2</sup> RISE, Early Intervention in Psychosis Service, South Lee Mental Health Service

<sup>3</sup> Department of Psychiatry & Neurobehavioural Science, University College Cork

<sup>4</sup> School of Public Health, University College Cork

**44. ECG MONITORING OF QTC PROLONGATION IN PATIENTS PRESCRIBED METHADONE**

**ELLE O'DRISCOLL<sup>1</sup>, AWWAD WILSON<sup>2</sup>**

<sup>1</sup> University Hospital Waterford

<sup>2</sup> National Drug Treatment Centre, Pearse Street, Dublin

**45. QUALITATIVE DESCRIPTIONS OF BIRTH TRAUMA SYMPTOMS: A REVIEW OF IRELAND'S FIRST PSYCHOLOGICAL BIRTH TRAUMA CLINIC**

**DARIA PRETS<sup>1</sup>, ANISHA BHAGAWAN<sup>2</sup>, RICHARD DUFFY<sup>3</sup>, URSULA NAGLE<sup>3</sup>**

<sup>1</sup> Bray Primary Care Centre, Bray, Co Wicklow

<sup>2</sup> Carlow/Kilkenny Mental Health Service, St Dymphna's Hospital, Carlow

<sup>3</sup> Rotunda Specialist Perinatal Mental Health Service, Rotunda Hospital, Dublin

**46. WORKING WITH HIGH-RISK YOUNG PEOPLE: AN EXPLORATION OF THERAPEUTIC ENGAGEMENT**

**RONAN RICE<sup>1</sup>**

<sup>1</sup> Ginesa, St John of God, Stillorgan, Co. Dublin

**47. TO EXPLORE CORRELATION BETWEEN BED AVAILABILITY IN PSYCHIATRIC UNITS AND RATE OF ADMISSIONS FROM EMERGENCY DEPARTMENT**

**MUHAMMAD TAHIR SALEEM<sup>1</sup>, SHIZA FAYYAZ<sup>1</sup>, DANIEL HERLIHY<sup>1</sup>**

<sup>1</sup> St. Luke's Hospital, Kilkenny

**48. TRENDS OF SMARTPHONE USE AMONG PSYCHIATRY NCHDS**

**COLM SWEENEY<sup>1</sup>, ZETTI AZVEE**

<sup>1</sup> Usher's Island, Dublin

<sup>2</sup> St Vincent's Hospital, Fairview

**49. BEHAVIOURAL PROBLEMS IN ADULTS WITH INTELLECTUAL DISABILITIES: MEDICATION MANAGEMENT AT BROTHERS OF CHARITY, 2020**

**AFIFA TAQVI<sup>1</sup>, EVAN YACOUB<sup>2</sup>**

<sup>1</sup> Day Hospital, Ballinasloe

<sup>2</sup> Brother of Charity Galway

**50. SAFEPSYCH: IMPROVING PATIENT SAFETY BY DELIVERING HIGH-IMPACT SIMULATION TRAINING ON RARE AND COMPLEX SCENARIOS IN PSYCHIATRY**

**KEZANNE TONG<sup>1</sup>, EIMEAR MCMAHON<sup>2</sup>, BRONWYN REID-MCDERMOTT<sup>3</sup>, DARA BYRNE<sup>3</sup>, ANNE DOHERTY<sup>4,5</sup>**

<sup>1</sup> Central Mental Hospital, Dublin

<sup>2</sup> Department of Psychiatry, University Hospital Galway

<sup>3</sup> Irish Centre for Applied Patient Safety and Simulation, National University of Ireland, Galway

<sup>4</sup> Department of Academic Psychiatry, University College Dublin

<sup>5</sup> Department of Psychiatry, Mater Misericordiae Hospital, Dublin

**51. IN SEARCH OF THE SOUND OF SILENCE - A CASE SERIES OF MUSICAL HALLUCINATIONS**

**RALPH TWOMEY<sup>1</sup>, ANNA YOUNG<sup>2</sup>, CAOIMHE CLARKE<sup>3</sup>**

<sup>1</sup> Perinatal Mental Health, National Maternity Hospital, Dublin

<sup>2</sup> Psychiatry of Old Age, 61 Eccles Street, Dublin

**52. SHARED-DECISION MAKING IN OUT-OF-HOURS MENTAL HEALTH ASSESSMENTS: A CLINICAL AUDIT IN A RURAL APPROVED CENTRE**

**YOSHITO URA<sup>1</sup>, GABRIELA SORIN<sup>2</sup>**

<sup>1</sup> CADS Longford/Westmeath

<sup>2</sup> MHID Longford Westmeath

**53. COMPLETED AUDIT CYCLE: CMHT REFERRALS - WHERE DO THEY COME FROM AND WHAT DO THEY SAY?**

**USHNA USMAN<sup>1</sup>, RICHELLE KIRRANE<sup>1</sup>, ART MALONE<sup>2</sup>**

<sup>1</sup> West Blanchardstown Adult Mental Health Services, Dublin

<sup>2</sup> St Vincent's University Hospital, Dublin

**54. A CASE SERIES OF SUSPECTED PSYCHOSIS IN THREE PATIENTS OF NIGERIAN DESCENT ADMITTED TO AN IN-PATIENT ADOLESCENT PSYCHIATRY UNIT**

**JAYENTHERIE VENKETRAMEN<sup>1</sup>, CATHERINE O'CALLAGHAN<sup>1</sup>, LOUISE O'ROURKE<sup>1</sup>**

<sup>1</sup> Eist Linn, Bessboro, Blackrock, Cork

**55. AUDIT OF COMPLIANCE WITH RECOMMENDATIONS FOR 'HIGH RISK' MEDICATION PRESCRIBING IN A REMAND PRISON SETTING**

**VIJO VERGHESE<sup>1</sup>, FIONA HOARE<sup>2</sup>, MOHAMED ALSAFFAR<sup>3</sup>, CONOR O'NEILL<sup>4</sup>, DAMIAN SMITH<sup>4</sup>**

<sup>1</sup> National Drug Treatment Centre, Pearse Street, Dublin

<sup>2</sup> Ballyfermot Community Mental Health team, Ballyfermot Mental Health Services

<sup>3</sup> Liaison Psychiatry department, Beaumont Hospital, Dublin

<sup>4</sup> Central Mental Hospital, Dublin

**56. FORENSIC MENTAL HEALTH INTELLECTUAL & DEVELOPMENTAL DISABILITY SERVICE: AN ANALYSIS OF REFERRAL PATTERNS AND COMPARISON WITH COMMUNITY MENTAL HEALTH INTELLECTUAL DISABILITY (MHID) SERVICES IN IRELAND**

**AFWAN WAHAB<sup>1</sup>, CALVIN HAR<sup>1</sup>, ANTHONY KEARNS<sup>2</sup>**

<sup>1</sup> Stewart's Care, Mental Health Intellectual Disability Service

<sup>2</sup> HSE Central Mental Hospital, National Forensic Mental Health Intellectual & Disability Service

**57. PREVALENCE OF TREATMENT-RESISTANT PSYCHOSES IN A COMPLETE NATIONAL FORENSIC MENTAL HEALTH SERVICE: A DUNDRUM REDEVELOPMENT EVALUATION (D-FOREST) STUDY**

**MUHAMMAD UMER WAQAR<sup>1</sup>, HANIA AMIN<sup>1</sup>,**

**EIMEAR NÍ MHUIRCHEARTAIGH<sup>1</sup>, HARRY KENNEDY<sup>2</sup>, MARY DAVOREN<sup>1,2</sup>**

<sup>1</sup> National Forensic Mental Health Service, Central Mental Hospital, Dublin

<sup>2</sup> The Dundrum Centre for Forensic Excellence, Trinity College Dublin

# MEDICAL STUDENT POSTERS

## 1. ASSET BASED COMMUNITY DEVELOPMENT IN MONAGHAN

**MAHMOUD ABBASSY<sup>1</sup>**, CHARLES CHENG<sup>1</sup>, DOLA THOTA<sup>1</sup>, ISHAN ANTONY<sup>1</sup>, CORINNA OLWILL<sup>2</sup>

<sup>1</sup> Royal College of Surgeons in Ireland, Dublin

<sup>2</sup> St Davnet's Hospital, Monaghan

## 2. HIGH LETHALITY ACTS OF INTENTIONAL DRUG OVERDOSE USING PRESCRIPTION MEDICATION: A RETROSPECTIVE COHORT STUDY

**HANNAH ASHE<sup>1,2,3</sup>**, GRACE CULLY<sup>4,5</sup>, JAMES KINAHAN<sup>2,3,6</sup>, ANNE JEFFERS<sup>7</sup>, MARIE COTTER<sup>8</sup>, SHEILA ROCHFORD<sup>8</sup>, EUGENE CASSIDY<sup>2,3</sup>,

ELLA ARENSMAN<sup>4,5</sup>, CAROLINE DALY<sup>4,5</sup>, ERIC KELLEHER<sup>2,3,6</sup>

<sup>1</sup> School of Medicine, University College Cork

<sup>2</sup> Liaison Psychiatry Service, Cork University Hospital, Cork

<sup>3</sup> Department of Psychiatry and Neurobehavioural Science, University College Cork

<sup>4</sup> National Suicide Research Foundation, Cork

<sup>5</sup> Department of Epidemiology and Public Health, University College Cork

<sup>6</sup> Liaison Psychiatry Service, Mercy University Hospital, Cork

<sup>7</sup> National Clinical Care Programme for Self Harm, HSE

<sup>8</sup> Department of General Practice, University College Cork

## 3. STANDARDISING CLINICAL TRIAL REPORTING IN DEMENTIA WITH LEWY BODIES USING A CORE OUTCOME SET (COS)

**GILLIAN DALY<sup>1</sup>**, JOSEPH PM KANE<sup>2</sup>, IRECEMA LEROI<sup>3</sup>, ANN-KRISTIN FOLKERTS<sup>4</sup>, IRINA KINCHIN<sup>5</sup>, IAN SALDANHA<sup>6</sup>, EMILIA GRYCUK<sup>1</sup>, RACHEL THOMPSON<sup>7</sup>, SARA BETZHOLD<sup>1</sup>, VALERIE SMITH<sup>8</sup>, EMILY EICHENENHOLTZ<sup>1</sup>, DAG AARSLAND<sup>9</sup>, JOHN-PAUL TAYLOR<sup>10</sup>, FEDERICO RODRIGUEZ-PORCEL<sup>11</sup>, ELKE KALBE<sup>4</sup>

<sup>1</sup> Trinity College Dublin

<sup>2</sup> Centre for Public Health, Queen's University, Belfast

<sup>3</sup> Global Brain Health Institute, Trinity College Dublin

<sup>4</sup> Medical Psychology | Neuropsychology and Gender Studies, Faculty of Medicine and University Hospital Cologne, University of Cologne, Germany

<sup>5</sup> Centre for Health Policy and Management, Trinity College Dublin

<sup>6</sup> Brown School of Public Health, Brown University, USA

<sup>7</sup> Lewy Body Society, United Kingdom

<sup>8</sup> School of Nursing & Midwifery, Trinity College Dublin

<sup>9</sup> King's College, London

<sup>10</sup> Newcastle University, Newcastle, UK

<sup>11</sup> Medical University of South Carolina, USA

## 4. DIFFERENCES IN TIC SEVERITY AND PSYCHIATRIC COMORBIDITY BETWEEN MALES AND FEMALES WITH PEDIATRIC TIC DISORDERS

**JOSEPH GIRGIS<sup>1</sup>**, TAMARA PRINGSHEIM<sup>2</sup>, DAVIDE MARTINO<sup>2</sup>

<sup>1</sup> Royal College of Surgeons in Ireland, Dublin

<sup>2</sup> Department of Clinical Neurosciences, University of Calgary, Canada

## 5. THE FIRST 300 ASSESSMENTS IN SLIGO ADULT ADHD CLINIC: COMORBIDITIES AND FUNCTIONALITY

**LÍADAN HANLEY<sup>1</sup>**, JULIAN COADA<sup>1</sup>, GERALDINE MCCARTHY<sup>1</sup>, DIMITRIOS ADAMIS<sup>1</sup>

<sup>1</sup> Sligo University Hospital, Sligo

## 6. MENTAL HEALTH & WELLBEING, SELF-HARM AND SUICIDALITY IN ADOLESCENTS TOWARDS THE END OF THE PANDEMIC IN URBAN AND RURAL SAMPLES

**HAZEL HEALY<sup>1</sup>**, MARY CANNON<sup>1</sup>, ADITI GUPTA<sup>1</sup>, EMMET POWER<sup>1</sup>, DAVID COTTER<sup>1</sup>, MAUREEN MCINTYRE<sup>2</sup>

<sup>1</sup> Royal College of Surgeons in Ireland, Dublin

<sup>2</sup> Cavan and Monaghan Education and Training Board

## 7. REVIEW OF THE LITERATURE ON STRESS-MANAGEMENT IN YOUNG MEDICAL PROFESSIONALS

**DMYTRO KASIANENKO<sup>1</sup>**, AOIFE O'CALLAGHAN, ALLYS GUERANDEL, GREGORY MORRISSEY

<sup>1</sup> Department of Psychiatry, University College Dublin

## 8. PREVALENCE OF PERSONALITY DISORDERS ACCORDING TO MILLON'S MODEL IN ADULTS WITH ATTENTION DEFICIT HYPERACTIVITY DISORDER (ADHD)

**DMYTRO KASIANENKO<sup>1</sup>**, MEMOONA USMAN, FAISAL SALEEM, BLÁNAID GAVIN, FIONA MCNICHOLAS, DIMITRIOS ADAMIS

<sup>1</sup> Department of Psychiatry, University College Dublin

## 9. A LONGITUDINAL EVALUATION OF THE IMPACT OF THE COVID-19 PANDEMIC ON PATIENTS WITH PRE-EXISTING MOOD DISORDERS

**EMMA O'GORMAN<sup>1</sup>**, BRIAN HALLAHAN<sup>2</sup>, AOIBHEANN RAINFORD

<sup>1</sup> National University of Ireland, Galway

<sup>2</sup> Sherwood House, Galway

## 10. AN EVALUATION OF SELF-HARM CARE DELIVERY DURING THE COVID-19 ERA BY THE CUH LIAISON/ SELF HARM SERVICE

**CÁITLÍN O'MAHONY<sup>1</sup>**, EUGENE CASSIDY<sup>2</sup>

<sup>1</sup> University College Cork

<sup>2</sup> Cork University Hospital

## 11. DELIRIUM ASSESSMENT IN AN INTENSIVE CARE UNIT

**PATRICK SWEENEY<sup>1</sup>**, EOGHAN KENNEDY<sup>1</sup>, CIARÁN FITZGERALD, BRUNO BIANCARDI, DIMITRIOS ADAMIS, GERALDINE MCCARTHY

<sup>1</sup> National University of Ireland, Galway

## 12. A META-ANALYSIS OF THE RELATIONSHIP BETWEEN PARENTAL DEATH IN CHILDHOOD AND SUBSEQUENT PSYCHIATRIC DISORDER

**SARAH SYER<sup>1</sup>**, MICHAEL MCKAY<sup>2</sup>, MARY CANNON<sup>3</sup>, COLM HEALY<sup>3</sup>, LAURIE O'DONNELL<sup>2</sup>, MARY CLARKE<sup>3</sup>

<sup>1</sup> Royal College of Surgeons, Dublin

<sup>2</sup> Department of Psychology, Royal College of Ireland, Mercer Street, Dublin

<sup>3</sup> Department of Psychiatry, Royal College of Surgeons in Ireland, Smurfit Building, Beaumont Hospital, Dublin

## 13. THE ASSOCIATION BETWEEN FAMILIAL DEATH IN CHILDHOOD OR ADOLESCENCE AND SUBSEQUENT SUBSTANCE USE DISORDER: A SYSTEMATIC REVIEW AND META-ANALYSIS

**SARAH SYER<sup>1</sup>**, MARY CLARKE<sup>2</sup>, COLM HEALY<sup>2</sup>, LAURIE O'DONNELL<sup>3</sup>, JON COLE<sup>4</sup>, MARY CANNON<sup>2</sup>, MICHAEL MCKAY<sup>3</sup>

<sup>1</sup> Royal College of Surgeons, Dublin

<sup>2</sup> Department of Psychiatry, Royal College of Surgeons in Ireland, Smurfit Building, Beaumont Hospital, Dublin

<sup>3</sup> Department of Psychology, Royal College of Ireland, Mercer Street, Dublin

<sup>4</sup> Department of Psychological Sciences, University of Liverpool, Brownlow Hill, Liverpool, United Kingdom

## 14. DELUSIONS OF PARENTHOOD IN AN IRISH SPECIALISED REHABILITATION UNIT: A CASE SERIES

**ASTEN YEO<sup>1</sup>**, SUPYAE YADANAR<sup>1</sup>, KEVIN FOY<sup>2</sup>

<sup>1</sup> School of Medicine, Trinity Biomedical Sciences Institute, Trinity College, Dublin

<sup>2</sup> Bloomfield Health Services, Rathfarnham, Dublin

NCHD POSTER COMPETITION JUDGES: DR CARAGH BEHAN, DR SHANE MCINERNEY, DR KAREN O'CONNOR AND DR RICHARD WILSON

MEDICAL STUDENT POSTER COMPETITION JUDGES: DR ANGELA CARBELLADO & DR SABINA FAHY

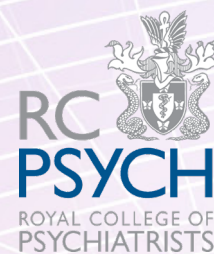
DATE FOR YOUR DIARY: SPRING CONFERENCE 2023  
30th & 31st March – Johnstown House, Enfield, Co Kildare





# College of Psychiatrists of Ireland

Wisdom • Learning • Compassion



College of Psychiatrists of Ireland  
5 Herbert Street, Dublin 2  
Tel: 01 661 8450 | Fax: 01 685 4291

[www.irishpsychiatry.ie](http://www.irishpsychiatry.ie)

@IrishPsychiatry  
#psychconf